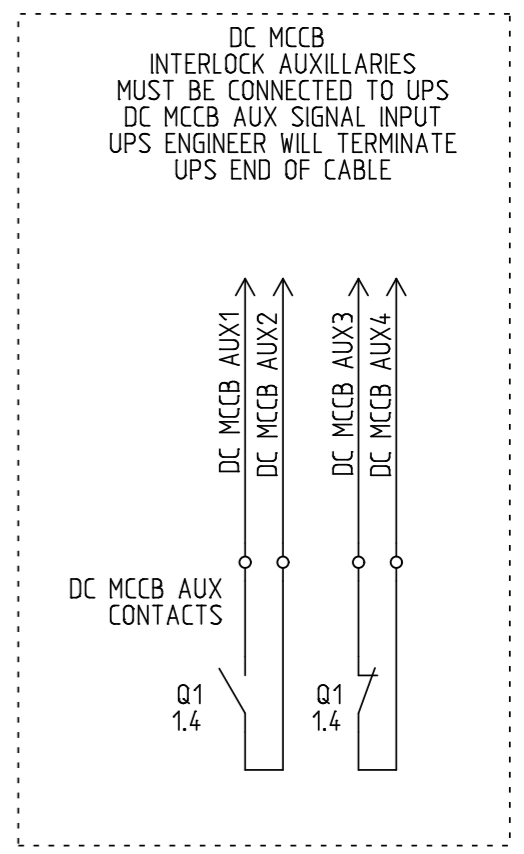
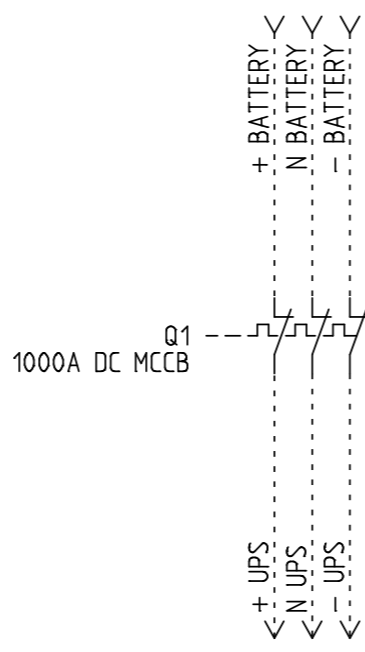


MAX PANEL SUPPLY PROTECTIVE DEVICE RATING:
1000 AMPS



NOTE:
 FOR SINGLE STRING SYSTEMS THE DC MCCB WOULD BE CONNECTED DIRECTLY TO THE BATTERIES
 FOR MULTI-STRING SYSTEMS THE DC MCCB WOULD BE CONNECTED TO A FUSED TRANSITION BOX

NO	NC
1.8	1.9

- NOTES:
- 1) PRODUCT MUST BE INSTALLED IN COMPLIANCE WITH ALL NATIONAL AND LOCAL ELECTRICAL REGULATIONS
 - 2) PLEASE REFER TO UPS PRODUCT MANUALS FOR ADDITIONAL INFORMATION
 - 3) ALL DIMENSIONS IN MM UNLESS OTHERWISE SPECIFIED
 - 4) 4 - CORE SHIELDED SIGNAL CABLE MUST BE RUN FROM EMBS TO EACH UPS UNIT
 - 5) ALL DASHED LINES EXTERNAL TO BYPASS PANEL

PRODUCT REF:	RB1-DC-MCCB-1000A-3P-1S	REV NO:	1
DOCUMENT NUMBER:	RBECAD01027	CREATION DATE:	29/04/2016
PAGE DESCRIPTION:	MAIN SWITCH'S	REV DATE:	12/08/2022
PROJECT NO:	SUBMITTAL DRAWING	DRAWN BY:	L RICHARDSON
PAGE TEMPLATE REF:	RBQS00075REV2	CHECKED BY:	D WARD
PRODUCT WEIGHT:	55KG	SHEET NUMBER:	1 OF 2

ENCLOSURE LAYOUT

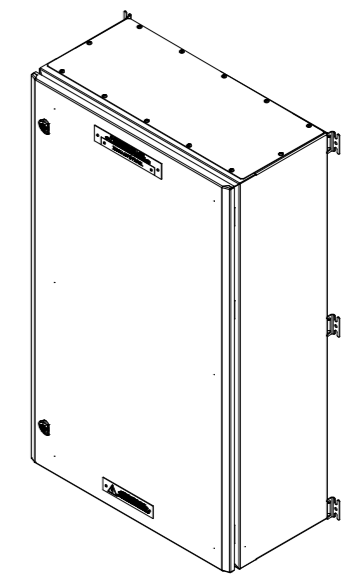
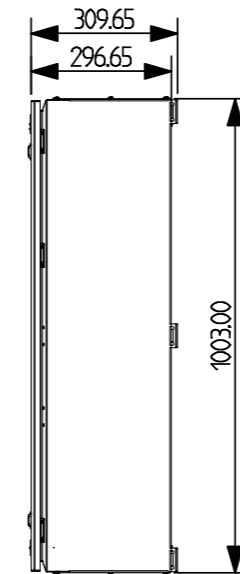
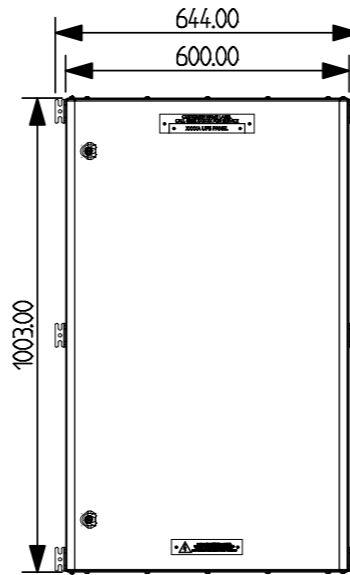
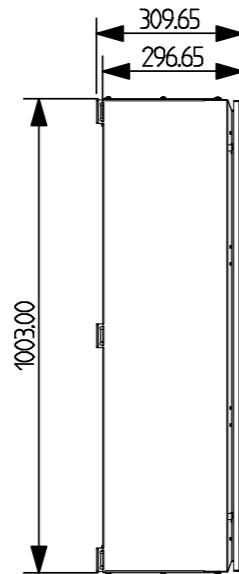
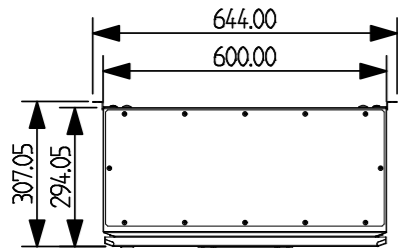
LEFT VIEW

FRONT/REAR VIEW

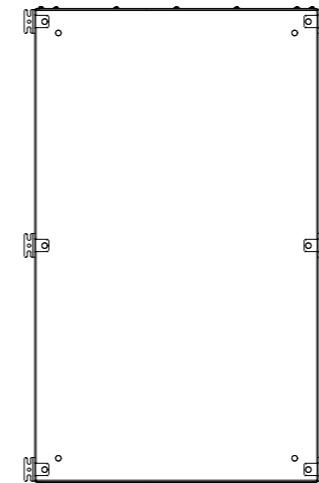
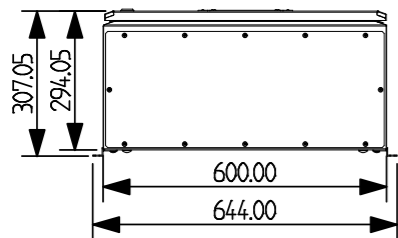
RIGHT VIEW

ISOMETRIC VIEW

TOP VIEW



BOTTOM VIEW



NOTES ON MECHANICAL LAYOUT:

1. ENCLOSURE CAN BE INSTALLED WITHOUT MOUNTING FEET IF PREFERRED
2. DOOR CAN BE HUNG ON OPPOSITE SIDE ON REQUEST

NOTES:

- 1) PRODUCT MUST BE INSTALLED IN COMPLIANCE WITH ALL NATIONAL AND LOCAL ELECTRICAL REGULATIONS
- 2) PLEASE REFER TO UPS PRODUCT MANUALS FOR ADDITIONAL INFORMATION
- 3) ALL DIMENSIONS IN MM UNLESS OTHERWISE SPECIFIED
- 4) 4 - CORE SHIELDED SIGNAL CABLE MUST BE RUN FROM EMBS TO EACH UPS UNIT
- 5) ALL DASHED LINES EXTERNAL TO BYPASS PANEL

PRODUCT REF:

RB1-DC-MCCB-1000A-3P-1S

DOCUMENT NUMBER:

RBECAD01027

PAGE DESCRIPTION:

MECHANICAL LAYOUT

PROJECT NO:

SUBMITTAL DRAWING

PAGE TEMPLATE REF:

RBQS00078REV2

PRODUCT WEIGHT:

55KG

REV NO:

1

CREATION DATE:

29/04/2016

REV DATE:

12/08/2022

DRAWN BY:

L RICHARDSON

CHECKED BY:

D WARD

SHEET NUMBER:

2 OF 2