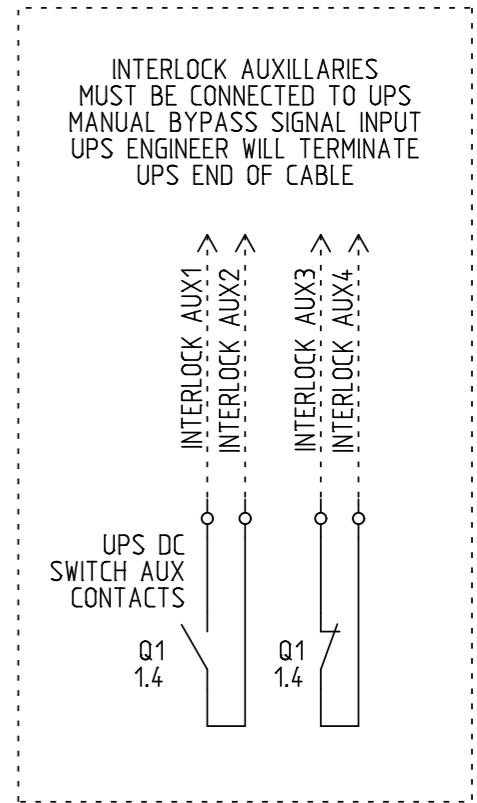
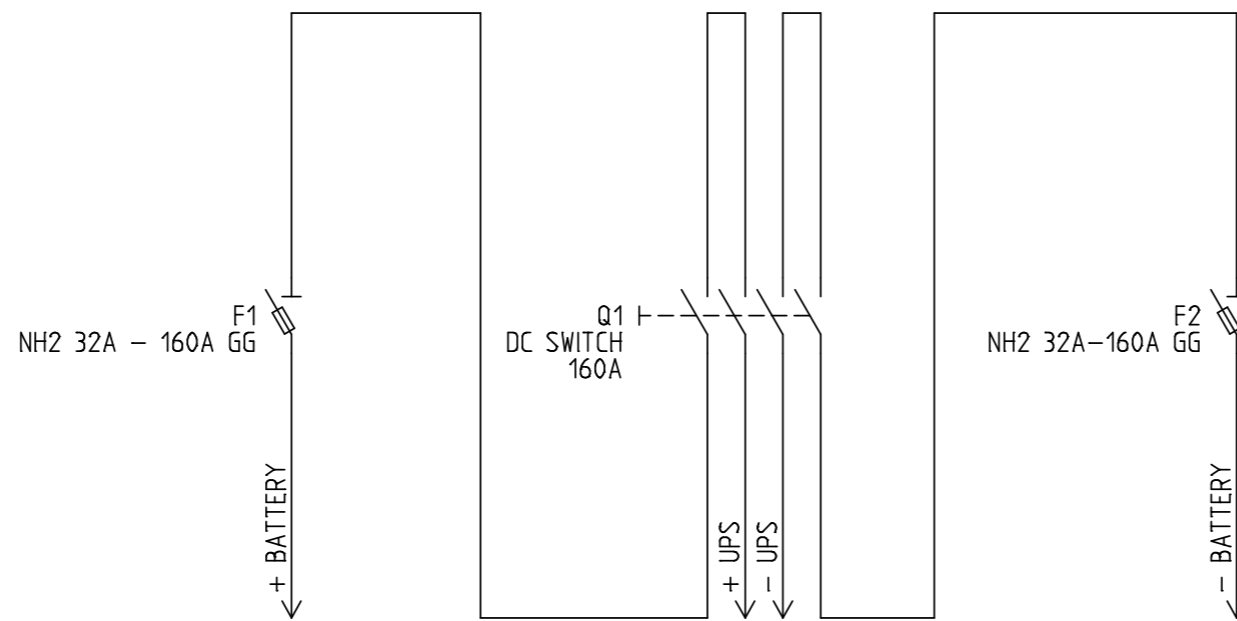


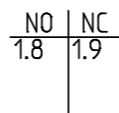
MAX PANEL SUPPLY PROTECTIVE DEVICE RATING:
160 AMPS



FUSE RATING OPTIONS:

32A
 63A
 100A
 125A
 160A

PLEASE SPECIFY ON ORDER

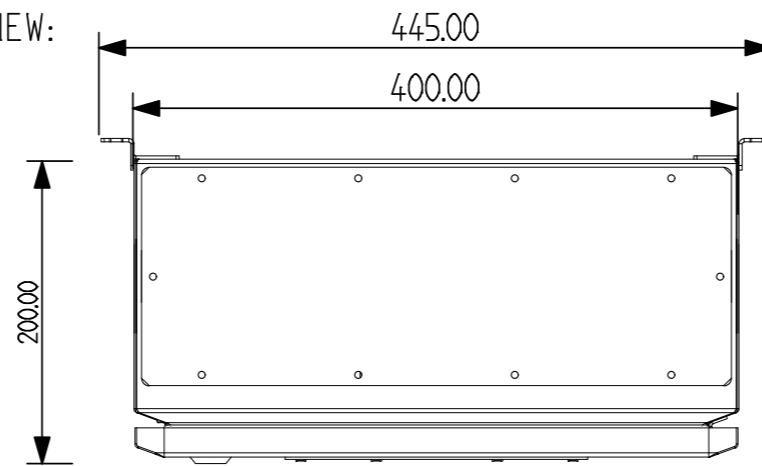


- NOTES:**
- 1) PRODUCT MUST BE INSTALLED IN COMPLIANCE WITH ALL NATIONAL AND LOCAL ELECTRICAL REGULATIONS
 - 2) PLEASE REFER TO UPS PRODUCT MANUALS FOR ADDITIONAL INFORMATION
 - 3) ALL DIMENSIONS IN MM UNLESS OTHERWISE SPECIFIED
 - 4) 4 - CORE SHIELDED SIGNAL CABLE MUST BE RUN FROM EMBS TO EACH UPS UNIT
 - 5) ALL DASHED LINES EXTERNAL TO BYPASS PANEL

| | | | |
|--------------------|----------------------|----------------|--------------|
| PRODUCT REF: | RB1-DC-ISO-160-2P-1S | REV NO: | 1 |
| DOCUMENT NUMBER: | RBECAD00367 | CREATION DATE: | 29/04/2016 |
| PAGE DESCRIPTION: | MAIN SWITCH'S | REV DATE: | 15/08/2018 |
| PROJECT NO: | SUBMITTAL DRAWING | DRAWN BY: | R BARNES |
| PAGE TEMPLATE REF: | RBQS00075REV2 | CHECKED BY: | L RICHARDSON |
| PRODUCT WEIGHT: | 35KG | SHEET NUMBER: | 1 OF 2 |

MECHANICAL LAYOUT

TOP VIEW:



TERMINATION DETAILS:

CABLING GLANDING: TOP/BOTTOM

CABLE TERMINATION:

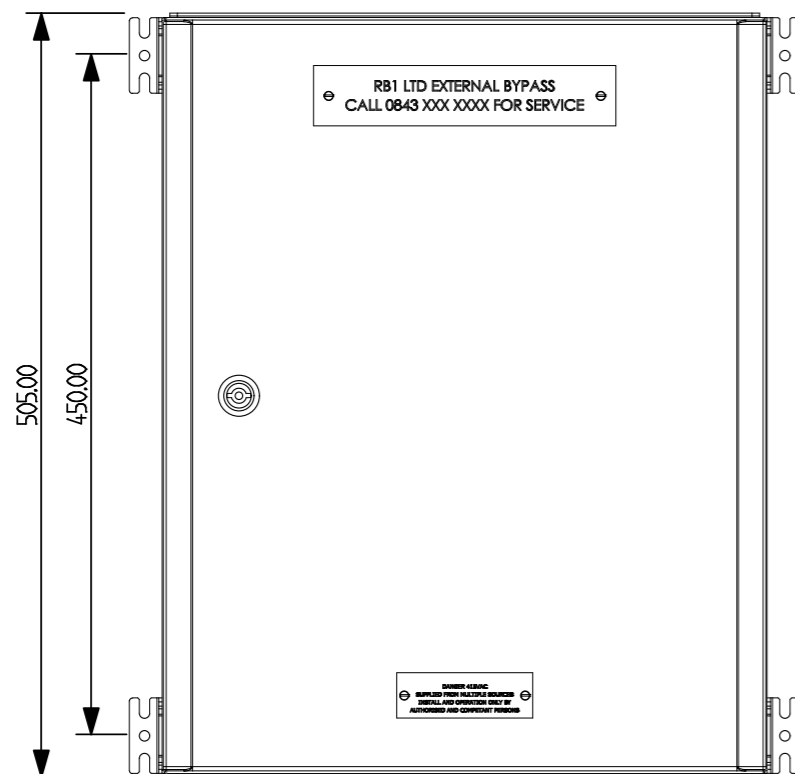
MAIN DC INPUT:

M8 BOLT ON SWITCH (TOP/BOTTOM)

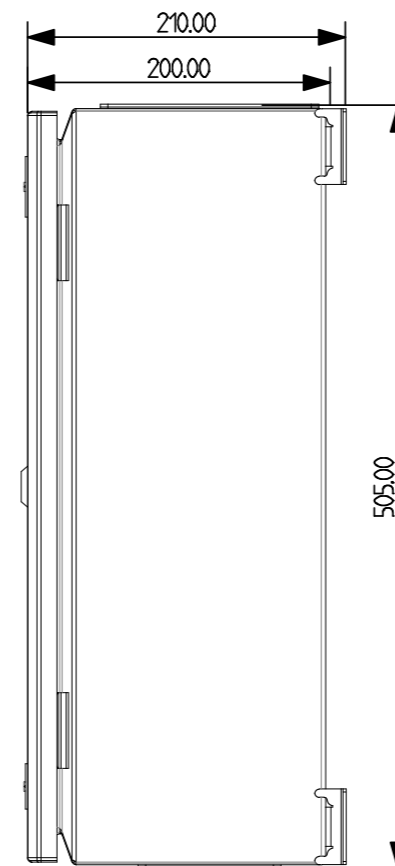
BATTERY:

M8 BOLT ON FUSE HOLDER (TOP/BOTTOM)

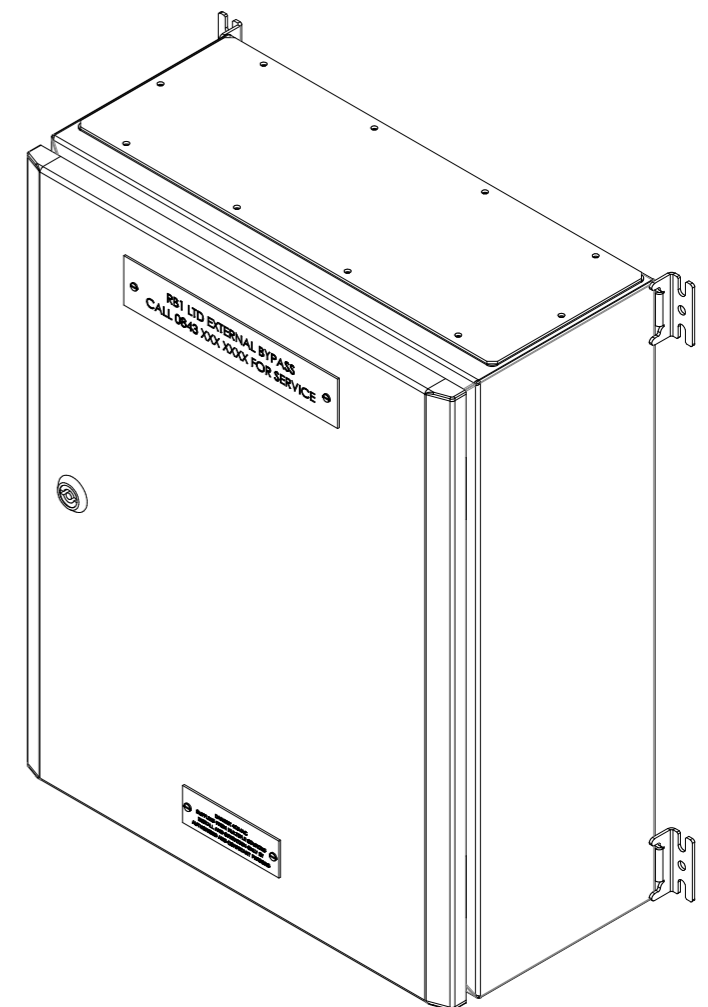
FRONT VIEW:



RIGHT VIEW:



ISO VIEW:



NOTES:

- 1) PRODUCT MUST BE INSTALLED IN COMPLIANCE WITH ALL NATIONAL AND LOCAL ELECTRICAL REGULATIONS
- 2) PLEASE REFER TO UPS PRODUCT MANUALS FOR ADDITIONAL INFORMATION
- 3) ALL DIMENSIONS IN MM UNLESS OTHERWISE SPECIFIED
- 4) 4 - CORE SHIELDED SIGNAL CABLE MUST BE RUN FROM EMBS TO EACH UPS UNIT
- 5) ALL DASHED LINES EXTERNAL TO BYPASS PANEL

| | | | |
|--------------------|----------------------|----------------|--------------|
| PRODUCT REF: | RB1-DC-ISO-160-2P-1S | REV NO: | 1 |
| DOCUMENT NUMBER: | RBECAD00367 | CREATION DATE: | 29/04/2016 |
| PAGE DESCRIPTION: | MECHANICAL LAYOUT | REV DATE: | 15/08/2018 |
| PROJECT NO: | SUBMITTAL DRAWING | DRAWN BY: | R BARNES |
| PAGE TEMPLATE REF: | RBQS00078REV2 | CHECKED BY: | L RICHARDSON |
| PRODUCT WEIGHT: | 35KG | SHEET NUMBER: | 2 OF 2 |